

# HOSE & FITTING

## Yellow Air Hose

### Features:



Light in weight and very durable.



The 2-ply polyester yarn "braided construction" delivers high working and bursting pressures ensuring safety.



Small bending radius of only 4-5 times the internal diameter.

Yellow Hi-Net hose is manufactured from all virgin P.V.C. resin with no refined materials. This gives the hose a much longer servicing life and reliable performance.

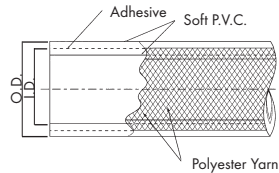
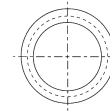
### Applications:

Tigerflex Yellow Hi-Net hose is particularly well suited for all purpose of air tools.

Model No.	Size	Inner Diameter (I.D.) (mm)	Outer Diameter (O.D.) (mm)	Standard Length (m)	Working Pressure (kgf/cm <sup>2</sup> ) (at 20°C)	Burst Pressure (kgf/cm <sup>2</sup> ) (at 20°C)	Reference Weight (g/m)
AF00515	Ø 9	9.0±0.3	16.2	100	28	115	166
AF00516	Ø 12	12.0±0.3	19.6	100	20	84	251
AF00517	Ø 19	19.0±0.5	27.6	100	18	73	399
AF00518	Ø 25	25.0±0.5	34.6	100	15	61	584



AF00515



Recommended for : Welding  
 Tube & Cover: N.R. Blended S.B.R. Compound  
 Finish: Blue and Red/Smooth



AF00088

Model No.	I.D.	O.D.	Working Pressure	Burst Pressure	Length Per Roll
	Inch	MM	PSI	PSI	Metre
AF00088	1/4"	13	200	600	100
AF00089	1/4"	13	200	600	50
AF00090	1/4"	13	200	600	30

Recommended for : General purpose air line or oxygen and acetylene welding hose  
 Tube & Cover: N.R. Blended S.B.R. Compound  
 Finish: Blue and Red/Smooth



AF00519

Model No.	I.D.	O.D.	Working Pressure	Burst Pressure	Length Per Roll
	Inch	MM	PSI	PSI	Metre
AF00519	5/16"	15	200	600	100

## Suction Hose (F-Type)

### Features:



Light in weight and easy to handle.



High in flexibility- usable anywhere.



Excellent in pressure resistance.



Transparent-Possible to observe inside conditions.



Superior in certain chemical resistance- excellent for fluid conveyance.



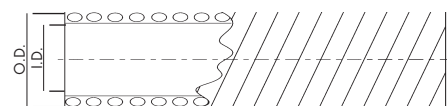
High in abrasion resistance- useful for conveyance of powers and grains.

F-Type Suction is also cuttable to any desired length, and has a smooth outer surface for ease of use, and interior flow resistance to reduce pressure loss.

Model No.	Size	Inner Diameter (I.D.) (mm)	Outer Diameter (O.D.) (mm)	Standard Length (ft)	Working Pressure (kgf/cm <sup>2</sup> ) (at 20°C)	Burst Pressure (kgf/cm <sup>2</sup> ) (at 20°C)	Min. Bending Radius (mm)	Reference Weight (g/m)
AF00028	Ø25	25.0 <sup>+0.7</sup> <sub>-0.5</sub>	32.0	30	4.5	19.0	80	0.39
AF00029	Ø32	32.0 <sup>+0.7</sup> <sub>-0.5</sub>	39.0	30	4.5	19.0	80	0.52
AF00030	Ø38	38.1 <sup>+1.0</sup> <sub>-0.5</sub>	45.1	30	4.5	18.0	125	0.59
AF00031	Ø50	50.8 <sup>+1.0</sup> <sub>-0.5</sub>	59.6	30	4.5	18.0	170	0.98
AF00032	Ø65	63.5 <sup>+1.5</sup> <sub>-0.5</sub>	72.5	20	3.5	15.0	220	1.21
AF00033	Ø75	76.2 <sup>+1.5</sup> <sub>-0.5</sub>	86.2	20	3.0	13.0	250	1.70
AF00034	Ø90	89.0 <sup>+2.0</sup> <sub>-0.5</sub>	99.8	20	3.0	12.0	320	2.05
AF00035	Ø100	101.6 <sup>+2.0</sup> <sub>-0.5</sub>	114.6	20	3.0	12.0	450	2.80
AF00036	Ø125	127.0 <sup>+2.0</sup> <sub>-0.5</sub>	140.0	20	2.0	9.0	720	3.50
AF00037	Ø150	151.0 <sup>+2.5</sup> <sub>-1.0</sub>	166.0	20	2.0	8.0	1200	4.30
AF00038	Ø177.8	178.0 <sup>+2.5</sup> <sub>-1.0</sub>	197.0	20	2.0	8.0	1300	6.8
AF00039	Ø200	203.0 <sup>+2.5</sup> <sub>-1.0</sub>	223.0	5	1.5	6.0	1500	8.40
AF00040	Ø250	254.0 <sup>+2.5</sup> <sub>-1.0</sub>	274.0	5	1.2	5.0	2200	12.00
AF00041	Ø300	304.8 <sup>+3.0</sup> <sub>-1.0</sub>	328.8	5	0.7	3.0	3000	16.00



AF00028



## Allinton Engineering & Trading Pte Ltd

Head Office: Block 803, King George's Avenue #01-234 Singapore 200803. Tel: 6296 0679 (10 lines) 6292 7728 Fax: 6297 0024

Branch Office: 21 Tuas Basin Link Singapore 638782 Tel: 6265 1888 (10 lines) Fax: 6265 5623

Web-site: <http://www.allinton.com.sg> E-mail: [allinton@singnet.com.sg](mailto:allinton@singnet.com.sg)

# HOSE & FITTING

## Duct Hose (GL-Type)

### Features:



Light in weight and easy to handle.



High in flexibility - usable anywhere.



Easy installation can be cut to any length.

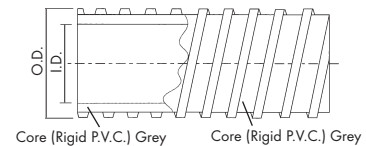
GL-Type Hose has low pressure loss due to the minimal flow resistance of the inner wall, is fade resistant and cuts down on operating noise.

### Applications:

- GL-Type Hose is an industrial PVC duct hose which performs well with collectors and sprayers in conveying light powers and gradules.
- Excellent for the discharge of exhaust fumes from woodworking machinery, sprayers, general machinery.
- Useful for dust collection and conveying exhaust fumes.



AF00042



Core (Rigid P.V.C.) Grey Core (Rigid P.V.C.) Grey

Model No.	Size	Inner (I.D.) (mm)	Outer Diameter (O.D.) (mm)	Standard Length (m)	Minimum Bending Radius (mm)	Reference Weight (g/m)
AF00042	Ø25	25.4 <sup>+1.5</sup> <sub>-1.0</sub>	32.8 <sup>+1.5</sup> <sub>-1.0</sub>	20	30	242
AF00043	Ø32	31.7 <sup>+1.5</sup> <sub>-1.0</sub>	39 <sup>+1.5</sup> <sub>-1.0</sub>	20	30	320
AF00044	Ø38	38.1 <sup>+1.5</sup> <sub>-1.0</sub>	46.7 <sup>+1.5</sup> <sub>-1.0</sub>	20	35	408
AF00045	Ø50	50.8 <sup>+1.5</sup> <sub>-1.0</sub>	60.9 <sup>+1.5</sup> <sub>-1.0</sub>	20	50	580
AF00046	Ø65	63.5 <sup>+1.5</sup> <sub>-1.0</sub>	73.6 <sup>+1.5</sup> <sub>-1.0</sub>	20	60	725
AF00047	Ø75	76.2 <sup>+1.5</sup> <sub>-1.0</sub>	86.3 <sup>+1.5</sup> <sub>-1.0</sub>	20	75	857
AF00048	Ø90	89.0 <sup>+1.5</sup>	99.1 <sup>+1.5</sup>	20	85	1019
AF00049	Ø100	101.6 <sup>+1.5</sup>	112.3 <sup>+1.5</sup>	20	90	1160
AF00050	Ø114.3	114.3 <sup>+1.5</sup>	125.6 <sup>+1.5</sup>	20	105	1120
AF00051	Ø125	127.0 <sup>+1.5</sup>	137.9 <sup>+1.5</sup>	20	120	1200
AF00052	Ø150	152.4 <sup>+1.5</sup>	163.9 <sup>+1.5</sup>	20	150	1700
AF00053	Ø175	175.0 <sup>+1.5</sup>	187.3 <sup>+1.5</sup>	20	180	2030
AF00054	Ø200	202.0 <sup>+1.5</sup>	214.0 <sup>+1.5</sup>	20	210	2450
AF00055	Ø250	252.0 <sup>+2.0</sup>	265.8 <sup>+2.0</sup>	20	260	3060
AF00056	Ø300	303.0 <sup>+2.0</sup>	316.8 <sup>+2.0</sup>	20	310	3680

## Hi-Net Hose

### Features:



Burst pressure 4 times higher than normal working pressure.



Easy to fit coupling.



Light in weight and simple to use.

No elongation observed at time of pressure due to warp reinforcement and elongation under high temperatures is less than 1/2 that of competitive products.

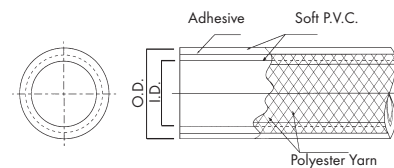
### Applications:

Hi-Net hose has many industrial uses; for water supply and drainage of machinery, for piping and draining of pneumatic and airconditioning units, for washing of ships and vehicles, for sprayers and fire extinguishers, and for piping of civil engineering and construction work.



AF00171

Model No.	Size	Inner Diameter (I.D.) (mm)	Outer Diameter (O.D.) (mm)	Standard Length (m)	Working Pressure (kgf/cm <sup>2</sup> ) (at 20°C)	Burst Pressure (kgf/cm <sup>2</sup> ) (at 20°C)	Reference Weight (g/m)
AF00171	Ø6	6±0.3	10.8±0.3	100	13.5	55	79
AF00172	Ø8	8±0.3	13.2±0.3	100	13.5	55	108
AF00173	Ø9	9±0.3	14.6±0.3	100	12.5	50	130
AF00174	Ø12	12±0.3	17.6±0.3	100	10.3	43	163
AF00175	Ø15	15±0.5	21.6±0.5	50	9.0	36	237
AF00176	Ø19	19±0.5	25.6±0.5	50	9.0	36	289
AF00177	Ø25	25±0.5	32.6±0.5	50	8.0	32	430
AF00178	Ø32	32±0.7	40.6±0.7	50	6.5	26	613
AF00179	Ø38	38±0.7	46.6±0.7	50	5.0	20	807
AF00180	Ø50	50±0.8	60.6±0.8	50	5.0	20	1300



Service Temperature: Below 65°C (below 40°C when subjected to pressure or small bending radius).  
 Working Pressure: Drops about 10% with each 10°C rise in temperature.  
 Minimum Bending Radius: 6 times the inside diameter.

## Allinton Engineering & Trading Pte Ltd

Head Office: Block 803, King George's Avenue #01-234 Singapore 200803. Tel: 6296 0679 (10 lines) 6292 7728 Fax: 6297 0024

Branch Office: 21 Tuas Basin Link Singapore 638782 Tel: 6265 1888 (10 lines) Fax: 6265 5623

Web-site: <http://www.allinton.com.sg> E-mail: [allinton@singnet.com.sg](mailto:allinton@singnet.com.sg)

# HOSE & FITTING

## Fire Reel Hose

### Features:



The 2-ply polyester yarn "braided construction" delivers high working and bursting pressures.



Light in weight and very durable.



Minimum bending radius is only 4.5 times the internal diameter.

Fire Reel Hose is manufactured from all virgin P.V.C. resin with no refined materials. This gives the hose reliable performance and a much longer servicing life. The corrugated outer surface provides an attractive appearance and good grip.

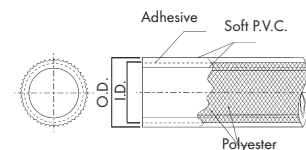
### Applications:

Tigerflex Air-conditioning hose is designed for fire fighting purposes, however due to its superior features and construction, the hose performs well as a delivery hose for fresh/ sea water, powers, and chemicals that are not reactive to P.V.C.



AF00642

Model No	Size	Inner Diameter (I.D.) (mm)	Outer Diameter (O.D.) (mm)	Standard Length (m)	Working Pressure (kgf/cm <sup>2</sup> ) (at 20°C)	Burst Pressure (kgf/cm <sup>2</sup> ) (at 20°C)	Reference Weight (g/m)
AF00642	Ø19	19.0±0.5	26.6	100	15	47	330
AF00643	Ø25	25.0±0.5	33.5	100	13	46	467



## Compressed Air Hose

### Model Compressed Air Hose – 10 Bar W.P.

Application: For special compressed air particularly from compressor.

Tube: Special thermoplastic compound, black. Resist to most of the gases (oxygen, ozone, acetylene, LPG, etc.), even for gases which trails of lubricating oil.

Reinforcement: Polyester high cohesive textile reinforced.

Cover: Special thermoplastic compound, black.

Working Pressure: 10 Bar

Temperature Range: -10 to +60°Celsius



AF00091

Model No.	Size
AF00091	3/8" x 100m
AF00092	1/2" x 100m
AF00093	3/4" x 100m
AF00094	1" x 50m
AF00095	1-1/4" x 50m

### Model Italy MP Hose – 20 Bar W.P.

Application: For multi-purpose usage on various fluids.

Tube: Special thermoplastic compound, black.

Reinforcement: Polyester high cohesive textile reinforced.

Cover: Special thermoplastic compound, red. Abrasion resistant.

Working Pressure: 20 Bar

Temperature Range: -10 to +60°Celsius



AF00096

Model No.	Size
AF00096	3/8" x 100m
AF00097	1/2" x 100m
AF00098	3/4" x 100m
AF00099	1" x 100m
AF00100	1-1/4" x 61m
AF00101	1-1/2" x 61m
AF00102	2" x 61m
AF00103	3" x 61m
AF00104	4" x 61m

## Sunny Hose



Transfers liquids faster, quicker and more economically.

AF 00057

Model No.	Size Inch
AF00057	1-1/2
AF00058	2
AF00059	2-1/2
AF00060	3
AF00061	4
AF00062	5
AF00063	6
AF00064	8
AF00065	10
AF00066	12

## PVC Hose



AF 00145

Model No.	Size Inch
AF00145	1/2" x 1.50mm x 50m
AF00146	1/2" x 2.00mm x 50m
AF00147	1/2" x 3.00mm x 30m
AF00148	1/2" x 3.00mm x 50m
AF00149	5/8" x 1.25mm x 45m
AF00150	5/8" x 1.50mm x 45m
AF00151	5/8" x 2.00mm x 45m
AF00152	5/8" x 3.00mm x 30m
AF00153	5/8" x 3.00mm x 50m
AF00154	3/4" x 1.75mm x 50m
AF00155	3/4" x 2.00mm x 50m
AF00156	3/4" x 3.00mm x 30m
AF00157	3/4" x 3.00mm x 50m

Model No.	Size Inch
AF00158	1" x 2.00mm x 50m
AF00159	1" x 2.50mm x 50m
AF00160	1" x 3.00mm x 50m
AF00161	1" x 4.00mm x 50m
AF00162	1-1/4" x 3.00mm x 30m
AF00163	1-1/4" x 3.00mm x 50m
AF00164	1-1/4" x 4.00mm x 30m
AF00165	1-1/4" x 4.00mm x 50m
AF00166	1-1/2" x 3.00mm x 30m
AF00167	1-1/2" x 3.00mm x 50m
AF00168	1-1/2" x 4.00mm x 30m
AF00169	1-1/2" x 4.00mm x 50m
AF00170	2" x 4.00mm x 30m

## Allinton Engineering & Trading Pte Ltd

Head Office: Block 803, King George's Avenue #01-234 Singapore 200803. Tel: 6296 0679 (10 lines) 6292 7728 Fax: 6297 0024

Branch Office: 21 Tuas Basin Link Singapore 638782 Tel: 6265 1888 (10 lines) Fax: 6265 5623

Web-site: <http://www.allinton.com.sg> E-mail: [allinton@singnet.com.sg](mailto:allinton@singnet.com.sg)