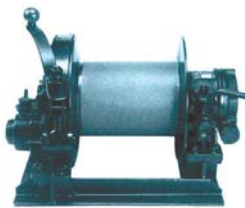


MATERIAL HANDLING

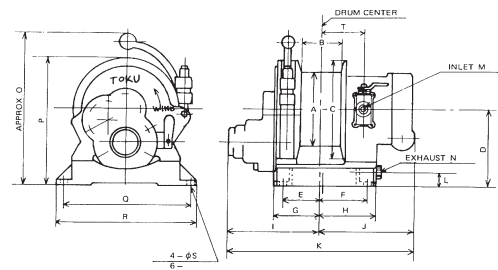
Air Winch



TAW-200 16044A
TAW-300 AQ00512



TAW-500 AQ00513
TAW-1000 AQ00514
TAW-1500 AQ00515
TAW-2000 AQ00516



Features

- Drum disengagement devise
- Compact & light weight
- Marine use standard
- Automatic safety brake
- Secondary manual brake
- Free speed control
- Remote control system available
- Explosion proof motor
- Simple maintenance
- Easy operation

Specification

Code No.	Model No.	Capacity		Wire Rope		Air Pressure		Rope Speed		Air Consumption		Net Weight		Hose Size		Air Inlet
		kg	lb	(mm) x (m)	(in) x (ft)	(kg/cm ²)	(m/min) x (ft/min)	(m ³ /min)	(cfm)	(kg)	(lb)	(mm) (in)				
AQ00512	TAW-300	300	600	6 x 60	1/4 x 200	4	15	49	1.7	59.5	42.5	93.5	19 ³ / ₄	P.T. 3/4		
						5	20	66	2.7	94.5						
AQ00513	TAW-500	500	1100	8 x 100	5/16 x 333	4	12	39	1.7	59.5	70	154	19 ³ / ₄	P.T. 3/4		
						5	16	52	2.7	94.5						
AQ00514	TAW-1000	1000	2200	10 x 100	3/4 x 333	4	4.0	13	1.7	59.5	88	195.5	19 ³ / ₄	P.T. 3/4		
						5	5.2	17	2.7	94.5						
AQ00515	TAW-1500	1500	3300	12 x 80	3/4 x 266	4	3.0	10	1.7	59.5	88	195.5	19 ³ / ₄	P.T. 3/4		
						5	4.3	14	2.7	94.5						
AQ00516	TAW-2000	2000	4400	16 x 65	5/8 x 215	4	3.0	10	2.5	87.5	130	286	19 ³ / ₄	P.T. 3/4		
						5	4.0	13	3.2	115.5						
						6	5.0	16	4.2	147						

Dimension in mm

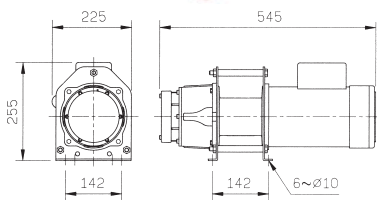
Model No.	A	B	C	D	E	F	G	H	I	J	K	L	M	N	O	P	Q	R	S	T
TAW-200	140	75	190	145	73	92	88	107	169	177	346	-	P.T. 3/4	-	345	240	228	258	11	92
TAW-300	158	102	238	160	87	103	102	118	184	193	377	-	P.T. 3/4	-	360	279	260	282	11	98
TAW-500	180	150	308	225	200	160	220	180	255	219	474	58	P.T. 3/4	P.T. 1 1/4	455	379	310	350	14	124
TAW-1000	200	243	340	225	254	208	270	226	317	266	583	58	P.T. 3/4	P.T. 1 1/4	475	395	310	350	14	171
TAW-1500	200	243	340	225	254	208	270	226	317	266	583	58	P.T. 3/4	P.T. 1 1/4	475	395	310	350	14	171
TAW-2000	300	236	460	286	250	206	270	226	317	266	583	58	P.T. 3/4	P.T. 1 1/4	587	516	420	460	14	171

CWG-DU204

Model	CWG-DU204	
Load rated (kg)	50Hz	250
	60Hz	200
Speed (M/min)	50Hz	10~15
	60Hz	12~18
Motor (HP x P)	1 x 4	
Voltage (V)	Single Phase 230V	
Lifting Height (M)	28	
Wire Rope (Ømm x M)	6 x 30	
Shipping Measurement (mm)	L	595
	W	275
	H	270
Net Weight (kg)	34	
Gross Weight (kg)	33.5	



AQ00529

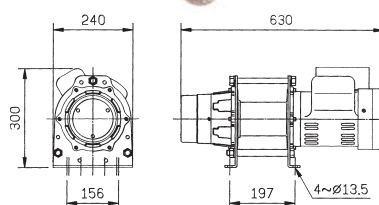


CWG-DU205

Model	CWG-DU205	
Load rated (kg)	50Hz	300
	60Hz	250
Speed (M/min)	50Hz	12.1~19
	60Hz	14.6~23
Motor (HP x P)	2 x 4	
Voltage (V)	Single Phase 230V	
Lifting Height (M)	38	
Wire Rope (Ømm x M)	7 x 30m	
Shipping Measurement (mm)	L	655
	W	262
	H	350
Net Weight (kg)	44	
Gross Weight (kg)	46	



AQ00530

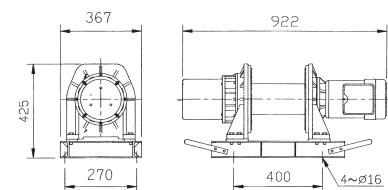


CWG-DU210

Model	CWG-DU210	
Load rated (kg)	50Hz	500
	60Hz	450
Speed (M/min)	50Hz	13~17
	60Hz	15~20
Motor (HP x P)	2 x 4	
Voltage (V)	Single Phase / 3 Phase 220V, 380V, 415V	
Lifting Height (M)	58	
Wire Rope (Ømm x M)	8 x 55m	
Shipping Measurement (mm)	L	1060
	W	440
	H	560
Net Weight (kg)	120	
Gross Weight (kg)	150	



AQ00533



Allinton Engineering & Trading Pte Ltd

Head Office: Block 803, King George's Avenue #01-234 Singapore 200803. Tel: 6296 0679 (10 lines) 6292 7728 Fax: 6297 0024

Branch Office: 21 Tuas Basin Link Singapore 638782 Tel: 6265 1888 (10 lines) Fax: 6265 5623

Web-site: <http://www.allinton.com.sg> E-mail: allinton@singnet.com.sg

KANAZAWA™

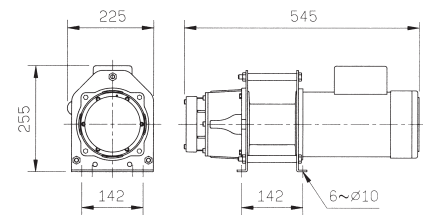
MATERIAL HANDLING

Electric Winch

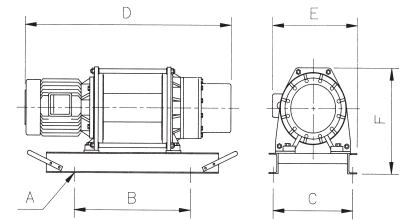
CWG-10201H-High Speed

Model	CWG-10201H	
Load rated (kg)	50Hz	250
	60Hz	200
Speed (M/min)	50Hz	16~23
	60Hz	19~28
Motor (HP x P)	1.5 x 4	
Voltage (V)	Single Phase	
	220V, 230V, 240V	
Lifting Height (M)	28	
Wire Rope (Ømm x M)	6 x 30	
Shipping Measurement (mm)	L	620
	W	280
	H	300
Net Weight (kg)	38.5	
Gross Weight (kg)	40	

AQ00534



MODEL: CWG-30375, 30565, 30750, 31500, 34000



Code No.	Model CWG-	Load Rated (kg) 50Hz/60Hz	Speed (m/min) 50Hz/60Hz	Motor (HPXP)	Voltage (V)	Lifting Height (M)	Wire Rope (fMM x M)	Hole Dimension (mm)			Winch Dimension (mm)			Shipping Measurement (mm)			Net Weight (kg)	Gross Weight (kg)
								A	B	C	D	E	F	L	W	H		
AQ00535	DU-212	1000	13 20.6 8.5 13.5	3 x 6	THREE PHASE 380/415V	58	10 x 55	4~f19	500	370	960	400	445	1120	600	720	185	220
AQ00537	DU-213	2000	7 12.5 4.6 8.3	5 x 6	380V 415V	97	12 x 70	4~f22	600	499	1160	565	650	1350	710	820	400	450
AQ00538	DU-214	3000	6.3 8.8 4.6 6.6	7.5 x 6	440V	144	16 x 70	8~f30	847	680	1431	740	860	1600	790	1050	800	860
AQ00539	DU-215	5000	8.0 12.0 5.3 8.0	15 x 4		192	18 x 70	8~f32	920	680	1860	740	905	2100	800	1100	1150	1230

• Pushbutton Switch



• Tackle Block



Single Sheave	Double Sheaves	Load Rated
CBT-0010	CBT-0010-D	1,000kg
CBT-0020	CBT-0020-D	2,000kg
CBT-0030	CBT-0030-D	3,000kg

• Weight Hook



Allinton Engineering & Trading Pte Ltd
 Head Office: Block 803, King George's Avenue #01-234 Singapore 200803. Tel: 6296 0679 (10 lines) 6292 7728 Fax: 6297 0024
 Branch Office: 21 Tuas Basin Link Singapore 638782 Tel: 6265 1888 (10 lines) Fax: 6265 5623
 Web-site: <http://www.allinton.com.sg> E-mail: allinton@singnet.com.sg

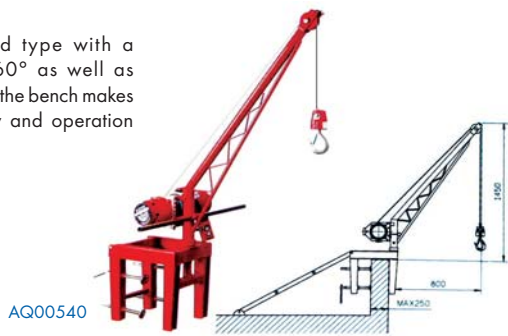
KANAZAWA™

MATERIAL HANDLING

Crane

CRF-2508

- The wall fitted type with a rotation of 360° as well as bearing fitted in the bench makes the turning easy and operation conveniently.



AQ00540

CRL-2508

- Fixed and movable type with a rotation capacity of 360° as well as bearings fitted in the middle of column makes the turning easy and operation conveniently.
- Anchored by wire rope



AQ00543

CRT-2510

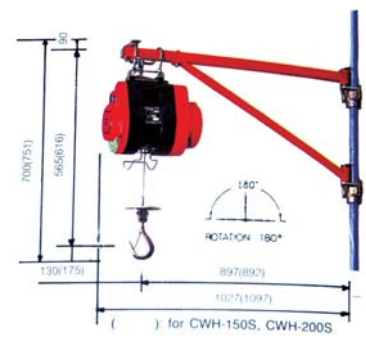
- Fixed and movable type with a rotation capacity of 135°
- Anchored by wire rope



AQ00541

CRH-0710

- Movable type with a 180° rotation
- Fixed on scaffolding in building sites



AQ00544

CRT-2511

- Fixed and movable type with a rotation capacity of 135°
- Anchored by wire rope



AQ00542

Crane Selections for Winches

Code No.	AQ00544	AQ00540	AQ00543	AQ00541	AQ00542
Model No.	CRH-0710	CRF-2508	CRL-2508	CRT-2510	CRL-2511
Max. Load	200kg	250kg	250kg	300kg	500kg
Weight	15kg	48kg	52kg	79kg	111kg
Applicable Winches	CWH-70S CWH-150S CWH-200S	CWG-10040 CWG-10060 CWG-10201H	CWG-10040 CWG-10060 CWG-10201H	CWG-10040 CWG-10060 CWG-10201H CWG-10251H CWG-10301H CWG-30075	CWG-10151 CWG-30151

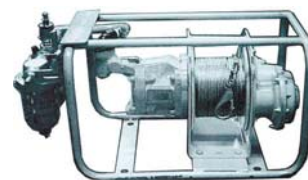
Air Mucking Winch

Special Features

- Build In Patented Automatic Brake
- Totally Enclosed Gear Section
- Light Weight & Compact Size
- High Speed Lifting
- Detachable Leg Frame
- Load Test To 125% of Rated Capacity

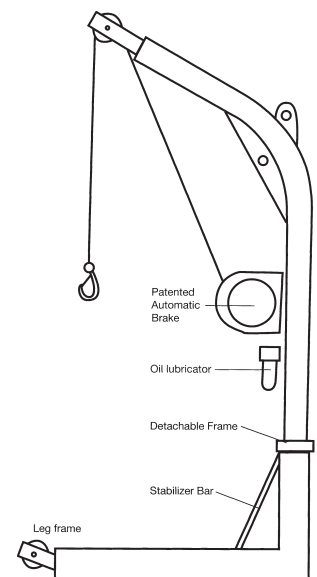
Standard Accessories

- Oil Lubricator
- Hook
- 40 metre wirerope (max. 60 meter)
- Cage Frame or Leg Frame
- Manufacturer Test Certificate



AQ00545
Cage Frame

Code No.	Model No.	IMPA Code	Capacity	Speed	Drum Capacity	Air Data	Winch Height	Winch with Cage Frame	Winch with Leg Frame	Inlet Size	Hose Size
AQ00545	TMW-75	590602	75kg	50m/min	4mm x 40mm	50cfm	18kg	24kg	52kg	1/2"	1/2"
AQ00546	TMW-100	590603	100kg	48m/min	4mm x 40mm	57cfm	20kg	26kg	54kg	1/2"	1/2"
AQ00547	TMW-150	590604	150kg	45m/min	5mm x 40mm	66cfm	22kg	28kg	56kg	1/2"	1/2"



Allinton Engineering & Trading Pte Ltd

Head Office: Block 803, King George's Avenue #01-234 Singapore 200803. Tel: 6296 0679 (10 lines) 6292 7728 Fax: 6297 0024

Branch Office: 21 Tuas Basin Link Singapore 638782 Tel: 6265 1888 (10 lines) Fax: 6265 5623

Web-site: <http://www.allinton.com.sg> E-mail: allinton@singnet.com.sg

KANAZAWA™