

# ELECTRICAL PRODUCTS

## Megaphone

### ER-76/76W (23W max.) Shoulder Type Megaphone

- High-output compact megaphone with instant-on amplifier.
- Reflex trumpet horn speaker with sound volume control.
- Howl-free unidirectional dynamic microphone with press-to-talk switch.
- Operates on 6 "C" type batteries.
- Built-in whistle signal (ER-76W).



AL00001

### ER-409 (23W max.) ER-409S with siren (23W max) Hand Grip Type Megaphone

- High-output compact megaphone with instant-on amplifier.
- Reflex trumpet horn speaker with sound volume control.
- Howl-free built-in unidirectional dynamic microphone with press-to-talk switch.
- Operates on 9 "C" type batteries.
- Built-in whistle signal (ER-409W) or switch on/off alarm siren (ER-409S).



AL00002

### ER-69W (45W max.) Shoulder Type Megaphone

- Large 350mm horn speaker.
- Auxiliary input jack for tape or radio earphone Output connection.
- Whistle signal, battery meter and auxiliary input volume control.
- Microphone lock switch.
- Mountable on optional speaker stand by using optional bracket.
- Operates on 10 "D" batteries or 12V via external power source input socket.



AL00004



AL00003

## High-Tech Soldering Systems

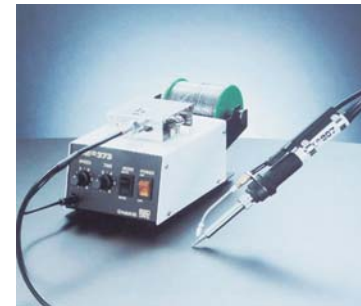
This system is a digital thermo-adjusted soldering iron with real time temperature display D.L.A.



Super PATRIOT-M Series  
AL00005



HI-TECH 555 series  
AL00006



V-Solder Machine  
BON-6002  
AL00007

## Soldering Iron

Mister Bonkote SR Series High Performance Soldering Irons with Veramic Heaters  
Bonkote Ceramic Soldering Irons System



- SR-1022 13" SG6Ø soldering bit  
AL00008  
SR-1032 18" SG6Ø soldering bit  
AL00009  
SR-1052 23" SG6Ø soldering bit  
AL00010



- SR-1052 25" SG7Ø soldering bit  
AL00011  
SR-1062 27" SG10Ø soldering bit  
AL00012  
SR-1062F 30" SG10Ø soldering bit  
AL00013  
SR-1072 40" SG10Ø soldering bit  
AL00014



- SR-1072FP 65" SG10Ø soldering bit  
AL00015



- SR-1082 60" SG12Ø soldering bit  
AL00016  
SR-100A 100" SG12Ø soldering bit  
AL00017

## Allinton Engineering & Trading Pte Ltd

Head Office: Block 803, King George's Avenue #01-234 Singapore 200803. Tel: 6296 0679 (10 lines) 6292 7728 Fax: 6297 0024

Branch Office: 21 Tuas Basin Link Singapore 638782 Tel: 6265 1888 (10 lines) Fax: 6265 5623

Web-site: <http://www.allinton.com.sg> E-mail: [allinton@singnet.com.sg](mailto:allinton@singnet.com.sg)

# ELECTRICAL PRODUCTS

## TQ-77 Quick Heat Soldering Iron

- 2 stage heat switching system.
- Pulling the trigger boosts the output of normal position (Low) by 10 times.
- The pistol grip was designed through careful ergonomics research. It can be operated for extended periods comfortably even by someone with a small hand. The design allows full concentration on the work by making it easy to see the tip.



AL00018

## KYP-70 Series Dual Power Soldering Iron

- Compact and lightweight, easy to use hobby soldering iron.
- Long-life black tip.
- High power (60W) (when pulling trigger) for soldering connectors and terminals, and Low (30W), for soldering electronic components etc.
- Heat insulation cap for quick storage (3mins after operation) KYP-70 only.



AL00019

## S-5 Handy Tool Set

- Contents:-
- |                                      |       |
|--------------------------------------|-------|
| Diagonal Cutting Plier               | 125mm |
| Long Nose Plier                      | 150mm |
| Side Cutting Plier                   | 150mm |
| Screw Driver Set (handle in neon)    |       |
| Handle only                          |       |
| Tweezer                              | 150mm |
| Adjustable Angle Wrench              | 150mm |
| Soldering Iron                       | 30W   |
| Solder, Paste, Punch, Chisel, Pencil |       |
| Duster-cloth                         |       |
| Case size: 260 x 160 x 40mm          |       |



AL00020

## S-7 Shoulder Tool Set

- Contents:-
- |                               |          |
|-------------------------------|----------|
| Diagonal Cutting Pliers       | 125mm    |
| Long Nose Pliers              | 150mm    |
| Side Cutting Pliers           | 150mm    |
| Adjustable Angle Wrench       | 150mm    |
| Screwdriver                   | 100mm    |
| Screwdriver                   | 100mm    |
| Screwdriver                   | 150mm    |
| Nut Driver                    | 5.5mm    |
| Philips Screw Driver          | 21 - 100 |
| Alignment Driver              | 150mm    |
| Soldering Iron                | 40W      |
| Tweezer                       | 150mm    |
| File (Flat)                   |          |
| Solder, Paste, Folding Meas., |          |
| Duster Cloth                  |          |
| Case size: 300 x 200 x 100mm  |          |



AL00021

## S-66 Tool Kit for OQ Foeld

- S-166 Case Only  
Case size: A75XB450XC315XD34mm  
Weight: 6.5kg  
Case material: ABS resin



AL00022

- Contain:-
- |                                   |       |
|-----------------------------------|-------|
| Alignment Tool                    | 150mm |
| Philips Screwdriver @No.0         | 100mm |
| Philips Screwdriver @No.2         | 100mm |
| Slotted Screwdriver @2.6          | 100mm |
| Slotted Screwdriver @4            | 100mm |
| Nut Driver 5.5mm                  |       |
| Desolder Braid                    |       |
| Soldering Iron with Cap           |       |
| File Flat                         |       |
| Diagonal Cutter                   | 125mm |
| Long Nose Pliers with Side Cutter | 150mm |
| Pliers with Side Cutter           | 150mm |
| Tweezers                          |       |
| Adjustable Wrench                 | 150mm |
| Measure Tape                      |       |
| Solder                            |       |
| Quick-point Knife                 |       |
| Case size: 300x200x90mm           |       |

## S-71 Tool Kit

- S-171 Case & Pallets Only  
Adopted double side open case. Stackable up to 300 x 420mm of technical samples, floppy disks and other measuring instruction.  
Case size: A50XB458XC334XD46mm  
Weight: 10kg



AL00023

- Contain:-
- |                                       |       |                   |
|---------------------------------------|-------|-------------------|
| Reversible Screwdriver @No.00 / @ 2.6 |       | Hex Wrench 1.27mm |
| Reversible Screwdriver @No.1 / @ 4.5  |       | Hex Wrench 1.5mm  |
| Reversible Screwdriver @No.2 / @ 6.0  |       | Hex Wrench 1.6mm  |
| Nut Driver 6mm                        |       | Hex Wrench 2.0mm  |
| Nut Driver 7mm                        |       | Hex Wrench 2.5mm  |
| Nut Driver 8mm                        |       | Hex Wrench 3.0mm  |
| Soldering Iron Stand                  |       | Hex Wrench 3.2mm  |
| Desolder Braid                        |       | Adjustable Wrench |
| Soldering Iron with Booster           |       | Measure Tape      |
| Solder                                |       | Quick-point Knife |
| Diagonal Cutter with Stripper         | 150mm |                   |
| Long Nose Pliers with Side Cutter     | 150mm |                   |
| Tweezers                              |       |                   |
| Slip Joint Pliers                     | 150mm |                   |
| Case size: 335x245x110mm              |       |                   |

150mm

## Industrial Fan



Desk Fan  
AL00024



Wall Fan  
AL00025



Pedestal Fan  
AL00026

## Allinton Engineering & Trading Pte Ltd

Head Office: Block 803, King George's Avenue #01-234 Singapore 200803. Tel: 6296 0679 (10 lines) 6292 7728 Fax: 6297 0024

Branch Office: 21 Tuas Basin Link Singapore 638782 Tel: 6265 1888 (10 lines) Fax: 6265 5623

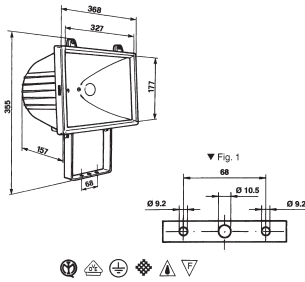
Web-site: <http://www.allinton.com.sg> E-mail: [allinton@singnet.com.sg](mailto:allinton@singnet.com.sg)

# ELECTRICAL PRODUCTS

## Metal Halide



AL00027



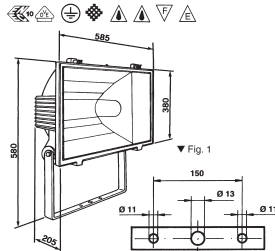
IP54 230V~50Hz  
Max 250W/400W E40

Description: Body and frame in die-casting aluminium, steel-bracket, cover of electrical part in nylon glass-loaded. Pure polished aluminium reflector. Protective screen in tempered glass 5mm. Galvanized steel screws. adjusting device for laying. Available for wall application. Fixing wheel-base Fig. 1.  
Examples of application: Flood towers, palaces, parkings, chutes, exhibitions, sports establishments, urban investment. Accessories: Protection grille in chromate steel cod. 71205. Glass with UV-filter cod 72700. Comply to regulations: EN 60598/1 ED 1994 EN 60598/2/5

Metal Halide: AL00027  
Metal Halide Blub: AL00029



AL00028

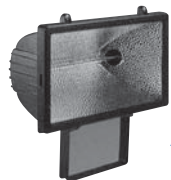


IP55 230V~50Hz  
Max 1000W E40

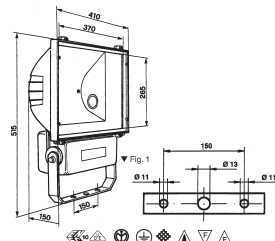
Description: Fitting in die-casting aluminium. Pure polished and anodized aluminium reflector. Large or narrow beam. Protective screen in tempered glass 5mm. Zinc-plated steel screws. Adjusting device for laying. Available in grey and black. Fixing wheelbase Fig. 1.  
Examples of application: Parkings, palaces, sports establishments, flood towers.  
Accessories: Kit 1000W with box in synthetic material 9, 5A cod. 21300/ 8,2a cod. 21301 (9,5a ST/ 8, 2A MT). Kit 1000W with box in die-cast aluminium 9, 5A cod. 21302/ 8,2A cod. 21303 (9, 5A ST/ 8, 2A MT). Glass with UV-filter cod. 12118. Comply to regulations: EN 60598/1 EN 1994 EN 60598/2/5.

Metal Halide: AL00028  
Metal Halide Blub: AL00030

## Flood Light



AL00031



IP54 230V~50Hz  
Max 1000-1500W Rx7s

Description: Body and frame in die-casting aluminium. Pure polished aluminium reflector. Protection screen in tempered glass 5mm. Glass with UV-filter cod. 12401. Comply to regulations: EN 60598/1 ED 1994 EN 60598/2/5

Flood Light	Halogen Tube
AL00031 500W	AL00034 500W
AL00032 1000W	AL00035 1000W
AL00033 1500W	AL00036 1500W

## Florescent Light Fitting



2FT AL00037  
4FT AL00038

## Florescent Tube



2FT AL00039  
4FT AL00040

## Screw Type Bulb



60W AL00041  
80W AL00042  
100W AL00043

## Pin Type Bulb



60W AL00044  
80W AL00045  
100W AL00046

## TEJ-108 Emergency Exit Signs



AL00047

## TEX/R-108 Emergency Exit Signs



AL00048

## TTH-110 Self-Contained Emergency Luminaires



AL00049

## TEL-30 Self-Contained Emergency Luminaires

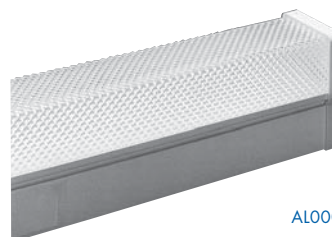
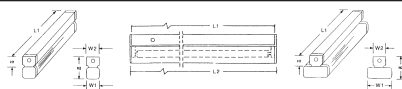


AL00050

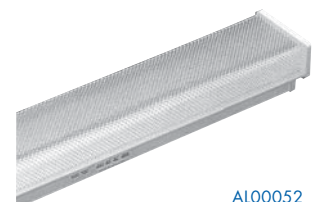
## TEL-30 Self-Contained Emergency Luminaires

The TDD (Diakon Diffuser Fitting) is mainly a bare channel with an extruded prismatic diffuser which improves visual comfort as glare is reduced. The TDD 220 and TDD 240 utilise twin lamp holders for convenience. Suitable for general illumination indoors and outdoors like corridors, lobbies and washrooms where safety and convenience is required.

Model	Catalogue Numbers	Lamps	L1 (mm)	L2 (mm)	W1 (mm)	W2 (mm)	H1 (mm)	H2 (mm)
AL00051	TDD 120	1 x 20W	610	615	60	57	92	45
AL00052	TDD 220	2 x 20W	610	615	110	57	92	45
AL00053	TDD 140	1 x 40W	1220	1225	60	57	92	45
AL00054	TDD 240	2 x 40W	1220	1225	110	57	92	45
AL00055	TDD 180	1 x 80W	1525	1530	60	57	92	45
AL00056	TDD 280	2 x 80W	1525	1530	110	57	92	45



AL00051



AL00052

## Allinton Engineering & Trading Pte Ltd

Head Office: Block 803, King George's Avenue #01-234 Singapore 200803. Tel: 6296 0679 (10 lines) 6292 7728 Fax: 6297 0024

Branch Office: 21 Tuas Basin Link Singapore 638782 Tel: 6265 1888 (10 lines) Fax: 6265 5623

Web-site: <http://www.allinton.com.sg> E-mail: [allinton@singnet.com.sg](mailto:allinton@singnet.com.sg)