

ACCESSORIES

Nikken Resibon™

Diamond Blades are for the Professional who demand the Ultimate in diamond blade performance. Our Blades are designed and produced to meet the highest cutting efficiencies. Fastest Cutting, Longest Life And Lowest Possible cutting cost.

Nikken Resibon™ Diamond Wheel



AE00188

AE00190

Genstar

Good for Masonry, Concrete & Other Building Material.

Model	Diameter	Inch	Width	Thickness	Hole
AE00188	110 mm	4"	4 mm	1.5 mm	20 mm
AE00189	125 mm	5"	4 mm	1.5 mm	20 mm
AE00190	180 mm	7"	4 mm	1.5 mm	25 mm

Diamond Cup Wheel



AE00202

Design for General Purpose, Fast Removal Grinding of Masonry, Concrete & Stone.

Model	Diameter	Width	Thickness	Hole
AE00202	100 mm	4.5 mm	6 mm	20mm

Diamond Rotary Cup Wheel



AE01021

For High Performance Grinding and Finishing on Flat Surface, Edges, Corner of Concrete & Stone.

Model	Diameter	Width	Thickness	Hole(mm)
AE01021	100 mm	8 mm	5 mm	22.23

Laserstar Diamond Wheel



AE00192

AE00193

Laserstar (Size: 10" & 12")

Long Life selected diamond and special metal bonding. Excellent for Masonry, Concrete blocks with various aggregates, Piles & Other Building Material.

Laserstar - Concrete (Size: 14", 16", 18" & 20")

Tungsten Carbide undercut protection segments. Long Life selected diamond and special metal bonding. Excellent for General Purpose, wide range of Cured Concrete with various aggregates, Piles.

Laserstar - Asphalt (Size: 14", 16", 18" & 20")

Long Life selected diamond and special metal bonding. Excellent for General Purpose, Abrasive Asphalt, Asphalt with various aggregates.

Model	Diameter	Width	Thickness	Hole
AE00191	255/10"	5 mm	3.2 mm	27 mm
AE00192	305/12"	5 mm	3.2 mm	27 mm
AE00193	355/14"	5 mm	3.2 mm	27 mm
AE00194	405/16"	5 mm	3.2 mm	27 mm
AE00762	500/20"	5 mm	3.8 mm	25 mm
AE01006	450/18"	5mm	3.8 mm	25 mm

Turbostar Diamond Wheel



AE00204

Fast cutting, Smooth Finish and Fine edge finish. Excellent for Granite, Ceramic and Stone Tile.

Model No	Dia (mm)	Width (mm)	Thickness (mm)	Hole (mm)
AE00204	105	6	1.6	20

Granite & Marble Grinding Wheel



AE01022

Granite Marble and Concrete

Nikken grinding disc are to be used for removing flashing from concrete forms and smoothing concrete, granite and marble.

Model	Diameter	Thickness	Hole
AE01022	100 mm	6 mm	16 mm

HI-LAP/PVA Marble & Grinding Polishing Wheel



AE01023

Marble and Granite Polishing & Finishing wheel
Also suitable for Glass, Copper, Stainless & Stone
Grit: 500, 800, 1,000, 1,200 & 1,500
Speed: (2,700 m/min), (8500 r.p.m)

Diameter	Width	Thickness	Hole
100 mm	23 mm	12 mm	16 mm

Model No.	Grit No.	Model No.	Grit No.
AE01023	500	AE01026	1200
AE01024	800	AE01027	1500
AE01025	1000		

Allinton Engineering & Trading Pte Ltd

Head Office: Block 803, King George's Avenue #01-234 Singapore 200803. Tel: 6296 0679 (10 lines) 6292 7728 Fax: 6297 0024

Branch Office: 21 Tuas Basin Link Singapore 638782 Tel: 6265 1888 (10 lines) Fax: 6265 5623

Web-site: <http://www.allinton.com.sg> E-mail: allinton@singnet.com.sg

ACCESSORIES

Nikken Resibon™ Depressed Center Grinding Wheel

• Heavy Duty & High Performance

Nikken Resibon™ resin-bonded depressed center wheels are manufactured with special high quality fiber reinforcements bearing high tensile strength and shock absorbing characteristics. Our depressed center wheels are produced with Double (2) and Triple (2.5) reinforcement fibers to provide high grinding efficiency, durability and operator safety.

• Consistent High Quality & Safety

Through the wide use of automated & computer controlled manufacturing facilities, such as automatic press system, bell type kiln (Vickley), finishing machines and a stringent quality control process; we are able to produce consistent high quality abrasive wheels. NIKKEN RESIBON™ depressed wheels are manufactured to comply with OSHA, ANSI(B7.1), JIS & DSA safety standards.

• Quality Assurance

Nikken Resibon™ abrasive wheels are subject to a preshipment inspection for every export shipment and are issued with Quality Inspection Report to ensure compliance standards.

DEPRESSED CENTER WHEELS

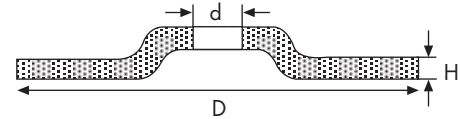
- Type 27
- Aluminium oxide resin bonded : For metal (steel)
- Silicon carbide resin bonded : For masonry (stone)
- Available without 5/8" adaptor - HUB
- Safety 4mm Double Reinforce
- Safety 6mm Triple Reinforce



AE00206

AE00210

AE00212



2 1/2 Fiber Reinforced (Heavy Duty)

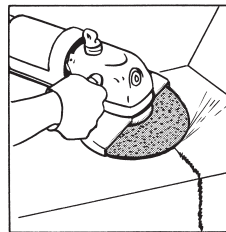
Steel Model No.	Stainless Model No.	Size Ø x Thickness x Hole	Max. Speed (R.P.M)	Application
AE00206	-	100 x 4 x 16	15,200	
AE00207	AE00215	100 x 6 x 16	15,200	
AE00208	-	115 x 4 x 22	13,300	
AE00209	AE00216	115 x 6 x 22	13,300	
AE00210	AE00217	125 x 6 x 22	12,200	
AE00211	AE00218	150 x 6 x 22	10,000	
AE00212	-	180 x 4 x 22	8,500	C46S: Natural & Artificial stone.
AE00213	AE00219	180 x 6 x 22	8,500	C24R: Fast cutting for stone.
AE00214	AE00220	230 x 6 x 22	6,600	WA30: Stainless Steel.
AE01028	-	150 x 4 x 22	10,000	ZA24(30): Heavy duty grinding.
AE01029	-	125 x 4 x 22	12,200	A46P: Non-ferrous (Brass-etc).
				A30R: General purpose for metal.

Nikken Resibon™ Flexible Disc

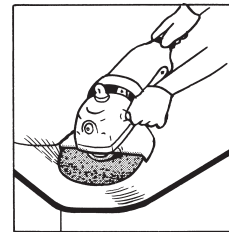
Specially designed for multi-puopose light duty grinding, sanding and polishing on a wide range of works. Excellent flexibility this disc to perform perfect grinding on concave, curved and grooved surfaced, where general grinding wheels and depressed center wheels are not suitable. While conventional fiber sanding disc with only one layer of abrasive particles become quickly dull as the particles glaze, this flexible disc has a self sharpening function, in which new abrasive grains are constantly released, giving longer disc life and uniform roughness of finished surfaces.



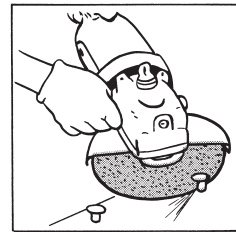
AE00221



Surfaced finishing on welded parts and descaling.



Finishing on curved surface, conditioning on spot-welding etc.



Light-duty cutting

(Safety with Double Reinforce)

Model No.	O.D.		Thickness		I.D.		Max. RPM
	mm	(inch)	mm	(inch)	mm	(inch)	
AE00221	100	(4")	2	(3/32")	(5/8")	13,700	15,300
AE00222	180	(7")	2	(3/32")	(7/8")	7,600	8,500
AE00223	180	(7")	4	(5/32")	(7/8")	7,600	8,500

Features	Workpieces	Applications				
		Steel & iron	Stainless Steel	Glass	Marble etc.	
Coarse	AC	36	AZ	46	GC	46
		46	WA			
Medium	AZ, AC	36	AZ	60	AC	60
		46	WA	80		80
Fine	AC	120	WA	100	GC	120
				120		220

Nikken Resibon™ Cut-off wheels

- Aluminum oxide resin bonded: For metal.
- Silicon carbide resin bonded: For masonry
- Available with round hole or diamond hole.
- Heavy Duty and high performance

Nikken Resibon™ resin-bonded cut-off wheels are manufactured with special high quality fiber reinforcements bearing high tensile strength and shock absorbing characteristics. Our cut-off wheels are produced with Single (1) Double (2) reinforcement fibers to provide fast cutting, minimal burrs, durability and operator safety.

• Consistent High Quality & Safety

Through the wide use of automated & computer controlled manufacturing facilities, such as automatic press system, bell type kiln (Vickley), finishing machines and a stringent quality abrasive wheels.

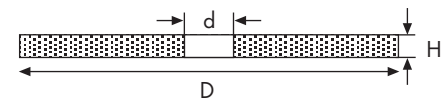
NIKKEN RESIBON™ depressed wheels are manufactured to comply with OSHA, ANSI(B7.1), JIS & DSA safety standards.

- Quality Resibon abrasive wheels are subject to a preshipment inspection for every export shipment and are issued with Quality Inspection Report to ensure compliance of standards.



AE00232

AE00224



Double Fiber Reinforced (Heavy Duty)

Steel Model No.	Stainless Model No.	Size (mm) Diameter x Thickness x Hole	Max. Speed		Application
			Single	Double	
AE00224	AE00233	(100X2X16)	13,700	15,200	A24Q: Fast cutting for metal.
AE01004	AE01005	(100X3X22)	13,700	15,200	A46S: Long life for pipe.
AE00225	AE00234	(115X3X22)	11,900	13,300	A46S: Long life for pipe, cast steel & graphite iron
AE00755	-	(125X3X22)	11,000	12,200	WA36R: Mild steel, Stainless steel.
AE00226	AE00235	(150X3X22)	9,100	10,000	19A36R: Stainless steel.
AE00227	AE00236	(180X3X22)	7,600	8,500	A46P: Non-ferous metal (Brass, Bronze, Copper, etc.)
AE00228	AE00237	(230X3X22)	5,900	6,600	C24R: Fast cutting for stone.
AE00229	AE00238	(255X3X25.4)	5,400	6,100	C30R: General purpose for stone.
AE00230	AE00239	(300X3X25.4)	4,500	5,100	C36S: Artificial & natural stone, concrete etc.
AE00231	AE00240	(350X3X25.4)	3,800	4,400	
AE00232	AE00241	(400X3X25.4)	3,400	3,800	

Allinton Engineering & Trading Pte Ltd

Head Office: Block 803, King George's Avenue #01-234 Singapore 200803. Tel: 6296 0679 (10 lines) 6292 7728 Fax: 6297 0024

Branch Office: 21 Tuas Basin Link Singapore 638782 Tel: 6265 1888 (10 lines) Fax: 6265 5623

Web-site: <http://www.allinton.com.sg> E-mail: allinton@singnet.com.sg

NIKKEN RESIBON™

ACCESSORIES

Fast Cut®

Heavy Duty & High Performance

Fast Cut® resin boned abrasive wheels are manufactured with high quality fibre-glass reinforcements bearing high tensile strength and shock absorbing characteristics.

Through a continues research & development, we have developed a unique X-Bond resin bonding formula & technology which provide superior grinding efficiency, durability and operator safety.

Consistent High Quality & Safety

Through the wide use of automated manufacturing equipment & computer controlled & processes, and a very stringent quality control process, we are able to produce consistent high quality abrasive wheels.

Fast Cut® wheels are manufactured to comply with German DSA, JIS, OSHA & ANSI B7.1 safety standards.

To meet the exacting safety requirements of the Industrial Safety Code for heavy industries, Fast Cut also product the "Triple Reinforced" depressed center grinder wheels, and the "Double Reinforced" cut-off wheels.

Quality Assurance & Safety

Fast Cut® abrasive wheels are subjected a final Pre-Shipment Inspection for every export shipment and are issued with a Quality Inspection Report to ensure compliance of performance & safety standard.



AE00267



AE00243



AE00257



AE00260

Grinding Disc (Steel)

Model No.	Size
AE00242	100 x 4 x 16
AE00243	100 x 6 x 16
AE00244	115 x 4 x 22
AE00245	115 x 6 x 22
AE00246	125 x 6 x 22
AE00247	150 x 6 x 22
AE00248	180 x 4 x 22
AE00249	180 x 6 x 22
AE00250	230 x 6 x 22

Grinding Disc (Stainless Steel)

Model No.	Size
AE00251	100 x 6 x 16
AE00252	115 x 6 x 22
AE00253	125 x 6 x 22
AE00254	150 x 6 x 22
AE00255	180 x 6 x 22
AE00256	230 x 6 x 22

Flexible Disc WA

Model No.	Size
AE00257	100 x 2 x 16
AE00258	180 x 2 x 22
AE00259	180 x 4 x 22

Cutting Disc (Steel)

Model No.	Size
AE00260	100 x 2 x 16
AE00261	115 x 3 x 22
AE00262	150 x 3 x 22
AE00263	180 x 3 x 22
AE00264	230 x 3 x 22
AE00265	255 x 3 x 25.4
AE00266	305 x 3 x 25.4
AE00267	355 x 3 x 25.4
AE00268	405 x 3 x 25.4

Cutting Disc (Stainless Steel)

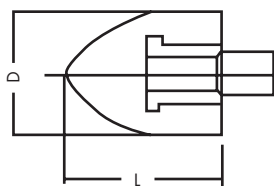
Model No.	Size
AE00269	100 x 2 x 16
AE00270	115 x 3 x 22
AE00271	150 x 3 x 22
AE00272	180 x 3 x 22
AE00273	230 x 3 x 22
AE00274	250 x 3 x 25.4
AE00275	305 x 3 x 25.4
AE00276	355 x 3 x 25.4
AE00277	405 x 3 x 25.4

Resibon

Cone Wheels (Japan)



AE00278



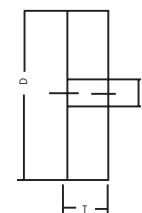
AC No.	Size mm	Shank Dia	Material	Speed
AE00278	40x58x9.53	3/8x16T	A24P	3000m/min
AE00279	40x58x9.53	3/8x24T	A24P	3000m/min
AE00756	50x65x15.88	5/8x11T	A24P	3000m/min

Nikken Resibon™

Straight Grinding Wheels (Japan)



AE00280



A/C No.	Size						Material	Speed
	D		T		H			
	in	mm	in	mm	in	mm		
AE00280	2"	50	1/2"	13	3/8"	9.53	A - 36Q	18,000
AE00281	2 1/2"	65	1/2"	13	3/8"	9.53	A - 30R	14,000
AE00282	3"	75	1/2"	13	3/8"	9.53	A - 24P	12,000
AE00283	4"	100	3/4"	19	1/2"	12.70	A - 24P	9,000
AE00284	5"	125	3/4"	19	1/2"	12.70	A - 24P	7,200
AE00285	6"	150	3/4"	19	1/2"	12.70	A - 24P	6,000

Allinton Engineering & Trading Pte Ltd

Head Office: Block 803, King George's Avenue #01-234 Singapore 200803. Tel: 6296 0679 (10 lines) 6292 7728 Fax: 6297 0024

Branch Office: 21 Tuas Basin Link Singapore 638782 Tel: 6265 1888 (10 lines) Fax: 6265 5623

Web-site: <http://www.allinton.com.sg> E-mail: allinton@singnet.com.sg